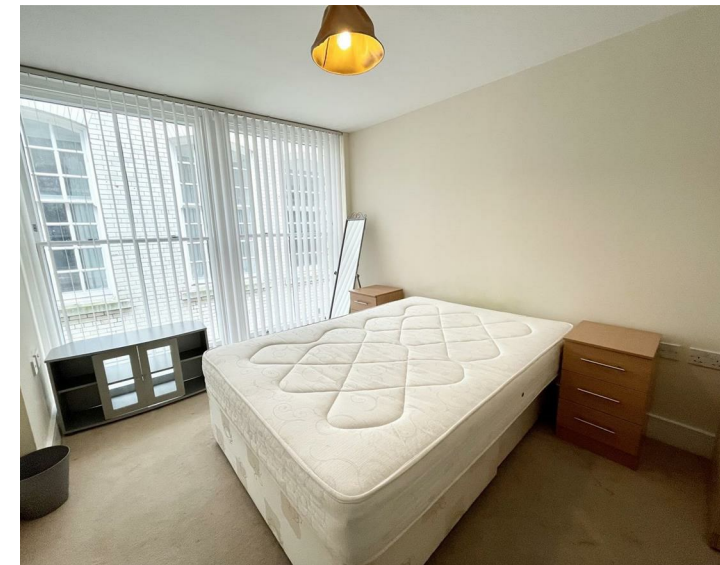
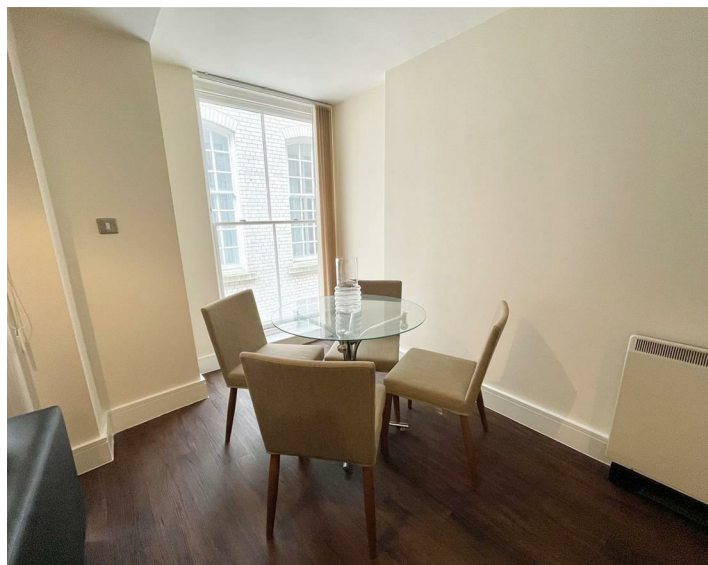




Apt 16 Sovereign Chambers, Liverpool, L2 5BA
£775 PCM

www.
cityresidential
.co.uk



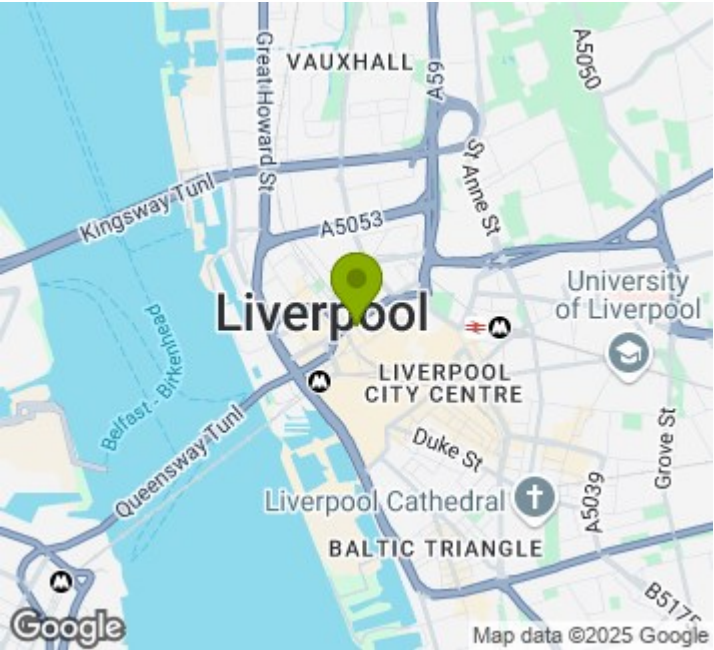
About the Property

AVAILABLE NOW is this well presented one bedroom apartment on the second floor of this modern conversion. Conveniently located for easy access to city centre amenities. Fully furnished throughout and consisting of an open plan living/dining and kitchen area, a good sized double bedroom and a well appointed bathroom.

A lift is available to all floors within the building. There is no parking included with this apartment.

Council Tax Band - B. EPC - C. A deposit amount of £923.00 is payable upon moving in. Call us now on 0151 231 6100 to secure a viewing.

- EPC - C
- Council Tax Band - B
- Deposit Amount - £923.00
- One Bedroom
- Fully Furnished
- Available Now
- No Parking



Energy Efficiency Rating

	Current	Potential
Very energy efficient - lower running costs		
(92 plus) A		
(81-91) B	84	84
(69-80) C		
(55-68) D		
(39-54) E		
(21-38) F		
(1-20) G		
Not energy efficient - higher running costs		
England & Wales	EU Directive 2002/91/EC	



City Residential
81/87 Victoria Street, The Old Haymarket, Liverpool L1 6DG
T: 0151 231 6100 F: 0151 231 6105
E: sales@cityresidential.co.uk



WWW.
cityresidential
.co.uk